



# S.G. INTERNATIONAL GROUP H.K. LIMITED

## SHENZHEN SHUGUANG DIGITAL TECHNOLOGY CO., LTD.

Add: Gold industrial park, NanLing village, Buji Town, Shenzhen, China

Tel: (86)0755-25387626

84701880

84701680

Fax : (86)0755-84701680

[Http://www.sgcg-group.com](http://www.sgcg-group.com)

E-mail: [sgled@vip.163.com](mailto:sgled@vip.163.com)

MSN: [sgled@hotmail.com](mailto:sgled@hotmail.com)

Yahoo Messenger: [sgled\\_usa@yahoo.com](mailto:sgled_usa@yahoo.com)

### ➤ XDSL Access Device 3V-NET1000 series broadband access



3V-NET1000 series broadband access equipments adopt xDSL and IP technologies to reach symmetry 10M (VDSL) rate on existing copper cable. This system is the ideal solution for the last mile access for its expandable, maintainable, manageable and operable abilities.

The system can be used by large carriers like China Telecom, and also the industry users such as power plant, oil fields etc., and large corporations. It is the representative product of xDSL in the market.

#### COMPONENTS

3V-NET1000 consists of CO equipments and CPE equipments:

#### CO SIDE

##### ●3V-NET 1000A

In a 19', 4U frame, provide up to 32 lines of VDSL access. Optional BAS module to provide 3-layer functions. It can be applied in access points with normal density The feat- user of the equipment involve small size and complete functions, flexible and expandable, which is convenient for networking and upgrade.

##### ●3V-NET 1000C

In a 19', 1U frame, provides 8 lines of VDSL access. Purely 2-layer equipments which are applied in low density access points. It is a good choice for cost-effective networking solution for its low price.

##### ●3V-NET 1000D

In a 19', 1U frame, provide 24 lines of VDSL/ADSL/optical LAN access. Purely 2-layer equipment which is applied in various density access points by up linking and supporting of abundant protocols. It is the ideal choice of Telecom carrier and integrators.





# S.G. INTERNATIONAL GROUP H.K. LIMITED

## SHENZHEN SHUGUANG DIGITAL TECHNOLOGY CO., LTD.

Add: Gold industrial park, NanLing village, Buji Town, Shenzhen, China

Tel: (86)0755-25387626

84701880

84701680

Fax : ( 86)0755-84701680

[Http://www.sgcg-group.com](http://www.sgcg-group.com)

E-mail: [sgled@vip.163.com](mailto:sgled@vip.163.com)

MSN: [sgled@hotmail.com](mailto:sgled@hotmail.com)

Yahoo Messenger: [sgled\\_usa@yahoo.com](mailto:sgled_usa@yahoo.com)

### ➤ XDSL Access Device 3V-NET1000 series broadband access

#### ●3V-NET 1000E

3V-NET 1000E consists of Main frame and User frame, both are 19', 4U frames, providing up to 120 lines of VDSL/ADSL/optical LAN access by the main frame. When the access points have even larger capacity, three User frames can be connected to the Main frame, which can provide 144 lines of VDSL/ADSL/optical LAN access per frame. So the total capacity of a set of 3V-NET 1000E is amounting to 552 lines. The features of this system are high density, supporting to multiple access methods and good price/performance. Larger network can be composed of multiple sets of 3V-NET 1000E equipments.



#### CPE EQUIPMENTS

#### ●VCPE-Y

VCPE-Y is the external VDSL MODEM, bridging function including an internal splitter. It can be connected to the computer by Cat. 5 cable (with network card installed in the PC). No need to open the computer or install any driver. It is very convenient for carrier to manage.



#### 3V-NET 1000 BAS

3V-NET 1000A has optional access server. The server has PPPoE/DHCP, firewall, NAT, Length/flow accounting, user level configuration functions, providing logging records, access control, bandwidth distribution and obligation.

It is applied in intelligent building and community, large or medium corporations and business or government organizations which have highly requirements in networking without proper backbone equipments in the WAN.

#### 3V-NET1000 Network Management System

3V-NET 1000 Network Management System is used to maintain the 3V-NET 1000 broadband access system. 3V-NET 1000 supports network management methods such as GUI, SNMP, WEB, TELNET, and RS232. GUI management system communicates with the equipment using TCP/IP protocol. A set of GUI network management system can control multiple sets of 3V-NET 1000 equipments at the same time. The latest version of GUI network management system can manage up to 20 thousands lines.

Network Management system provides five functions: Topology management, Configuration management, User management, Fault management and Accounting management.

The required hardware platform to run 3V-NETVIEW: PIII 550 or above, 10G hard disk or above, 128M memory or above, 10/100M network card. Operating system: WINDOW Series, supporting WIN 95/98/ME/NT/2000/XP.



# S.G. INTERNATIONAL GROUP H.K. LIMITED

## SHENZHEN SHUGUANG DIGITAL TECHNOLOGY CO., LTD.

Add: Gold industrial park, NanLing village, Buji Town, Shenzhen, China

Tel: (86)0755-25387626

84701880

84701680

Fax : (86)0755-84701680

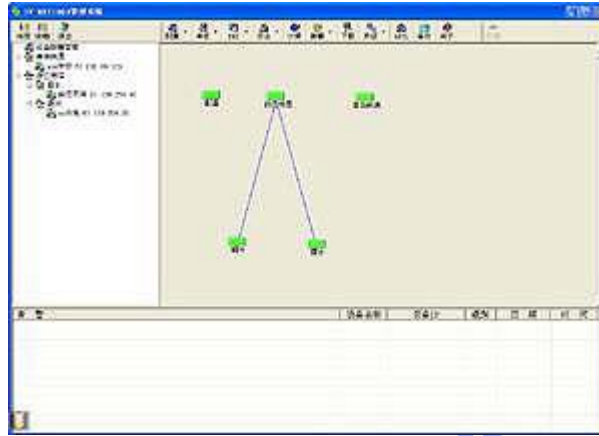
[Http://www.sgcg-group.com](http://www.sgcg-group.com)

E-mail: [sgled@vip.163.com](mailto:sgled@vip.163.com)

MSN: [sgled@hotmail.com](mailto:sgled@hotmail.com)

Yahoo Messenger: [sgled\\_usa@yahoo.com](mailto:sgled_usa@yahoo.com)

### ➤ XDSL Access Device 3V-NET1000 series broadband access



#### FEATURES

- ★ Adopt VDSL technology, transmitting data at up to 10M in 1.5km through existing copper cable. Overcome the crosstalk of ADSL and HomePNA. Efficiently use the copper resources.
- ★ Support both VDSL and ADSL users.
- ★ Choose to use small BAS or traditional large B-NAS.
- ★ Telecom level equipment, considering the maintenance by applying plug in and out boards or modules, backup power module. Monitor the CPE. Auto search equipments and perfect diagnose functions.
- ★ Abundant 2-layer network functions, including VLAN, IGMP, SPANNING TREE, COS, Port Bonding etc, in which the group broadcasting technology cross VLAN can be applied in the WAN, which uses VLAN to isolate users. With spanning tree function users can create loop network in the access layer to utilize optical cable more efficiently, which can also provide self-healing protection function.
- ★ Convenient installation. High reliability.

Port status inquire in Network Management System

- ① Close or open the port.
- ② Set port rate in physical layer, 0-10M, in 100K (supported by 3V-NET 1000E).
- ③ Monitor the CPE status and require the version of CPE. Check the connection with PC. Use this function to make the maintenance simpler.
- ④ Prevent the user to connect several computers through one VDSL line by bonding the port to MAC address. Check the MAC addresses of the port.
- ⑤ View the modulation mode, SNR and error coding of VDSL port.