



S.G. INTERNATIONAL GROUP H.K. LIMITED

SHENZHEN SHUGUANG DIGITAL TECHNOLOGY CO., LTD.

Add: Gold industrial park, NanLing village, Buji Town, Shenzhen, China

Tel: (86)0755-25387626

84701880

84701680

Fax : (86)0755-84701680

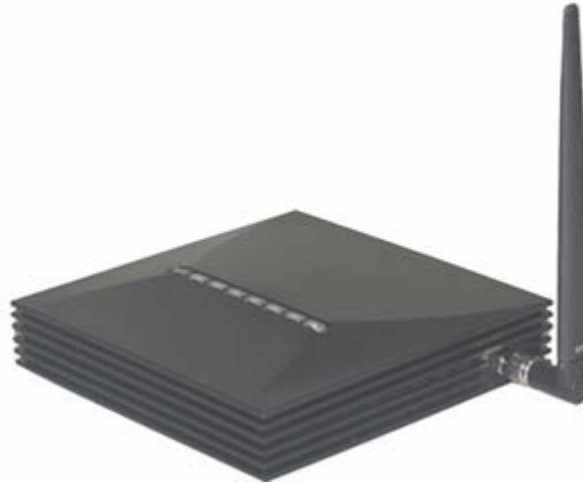
[Http://www.sgcg-group.com](http://www.sgcg-group.com)

E-mail: sgled@vip.163.com

MSN: sgled@hotmail.com

Yahoo Messenger: sgled_usa@yahoo.com

➤ GSM/CDMA/PHS Fixed Wireless VOIP Gateway



SG9000

Basic Functions

1. Supporting all frequencies of GSM/CDMA
2. Automatically switch call from GSM, PSTN and INTERNET.
3. Remoting user can free call anybody passing two routes among GSM, PSTN and INTERNET in gateway(optional).
4. VOIP applying functions: it can support call keeping, telephonist transfer, call waiting, unread SMS hint, avoidance of disturbance, three party service, different operators, hotline, alarm and call forwarding when busy line, no answering of the call, no condition.
5. Incoming call display.
6. Billing support.
7. Pre-set area code, IP number, Special service number and any other head numbers.
8. Privilege setting for international distant and local call-in and call-out.
9. Function of locking the SIM/RUIM card, terminal, network and district.
10. Supporting connecting PBX for group users.
11. Indicator for signal, power and busy line function.
12. VOIP can support: AGS, G165, RFC2833, FSK dialling directly, G711 fax, TOS, NAT dialling directly.
13. With battery storage (optional).
- 14 Supporting PC fax or G3 fax (optional).
15. Internet connection(optional).
16. Payment Management Function(optional).

Characteristics

1. Simple operation as normal fixed telephone.
2. Rapid network searching, quick response for dialing, high voice resolution quality and harmless low radiation.
3. Automatic identification of domestic, long and VOIP calls from call-out calls.
4. Support all the functions of ASTERISK. It can support automatic downloading of configuration, automatic detecting and updating the newest version.
5. Supporting voice encoding and decoding of G.711, G.723, G.729 as well as protocol of SIP, TCP/IP, RTPCP,T.38, UDP, DHCP, DNS, FTP, RTP, PPPOE

© 1997-2007, S.G. INTERNATIONAL GROUP H.K. LTD. All rights reserved.

Buji Town, Shenzhen 518123, China

Tel: +86-755-25387626 , 84701880 , Fax: +86-755-84701680

Sales email: sgled@vip.163.com

ISO 9001:2000



Cert. #801532



S.G. INTERNATIONAL GROUP H.K. LIMITED

SHENZHEN SHUGUANG DIGITAL TECHNOLOGY CO., LTD.

Add: Gold industrial park, NanLing village, Buji Town, Shenzhen, China

Tel: (86)0755-25387626

84701880

84701680

Fax :(86)0755-84701680

[Http://www.sgcg-group.com](http://www.sgcg-group.com)

E-mail: sgled@vip.163.com

MSN: sgled@hotmail.com

Yahoo Messenger: sgled_usa@yahoo.com

➤ CDMA Fixed Wireless Terminal 800MHZ/450MHZ



SG1000CS

Basic Function

- 1、 Suitable for CDMA450MHZ or 800MH or 1900MHZ, simulate an ordinary telephone wire, connecting the ordinary telephone, number of UIM card that its number is offered by mobile network firms, realizing the local call、 domestic and international call.
- 2、 Wireless and wired switch function.
- 3、 Can connect charging devices, support precise charging function.
- 4、 Support call-in numbers to display, operating like the ordinary desk-top telephone.
- 5、 Program by ordinary telephone.
- 6、 Pre-set the area code and IP special service number, add the IP number automatically while dialing the long distance call.
- 7、 Set all kinds of authorities about International、 domestic and local incoming calls.
- 8、 Pre-set PIN yard protected function, make the terminal and UIM card one-to-one correspondence.
- 9、 Connect PBX by optimize the circuit directly, can connect a lot of inner lines.
- 10、 Display the power and signal function.
- 11、 Hold the external storage battery to charge while losing electrical power.

Main performance

- 1、 High clear pronunciation.
- 2、 Search for the network apace , dial rapidly , strengthen the aerial, high sensitivity, no radiation to the human body.
- 3、 Discern the local call and long-distance call automatically while dialing
- 4、 The wide voltage running , low power dissipation.
- 5、 RS232 and RJ-11 interfaces, good match performance with equipments, connect the standard charging devices and the concentration charging rate management devices, realize the common public call charging, link the Mini-PBX to use conveniently in the multi-user group, meet the number written into and set up the demand with other data .
- 6、 Adopt the desk-top or the hang type to install.

Specifications

- 1、 Protocol: CDMA Mobile Network
- 2、 Working Frequency:CDMA450MHZ or 800MH or 1900MHZ
- 3、 Size: 185mm×135mm×22mm
- 4、 Weight: 400g
- 5、 Color: White、 Blue、 Red
- 6、 Environment Temperature: -10℃ ~ +40℃
- 7、 Environment Noise: <60db
- 8、 AC Input: DC10V—20V
- 9、 Standby Time: 24 Hours*
- 10、 Calling Time: 120 Minutes*
- 11、 Interface: RS232 Support

© 1997-2007, S.G. INTERNATIONAL GROUP H.K. LTD. All rights reserved.

Buji Town, Shenzhen 518123, China

Tel: +86-755-25387626 , 84701880 , Fax: +86-755-84701680

Sales email: sgled@vip.163.com

ISO 9001:2000



Cert. #801532