



S.G. INTERNATIONAL GROUP H.K. LIMITED

SHENZHEN SHUGUANG DIGITAL TECHNOLOGY CO., LTD.

Add: Gold industrial park, NanLing village, Buji Town, Shenzhen, China

Tel: (86)0755-25387626

84701880

84701680

Fax : (86)0755-84701680

[Http://www.sgcg-group.com](http://www.sgcg-group.com)

E-mail: sgled@vip.163.com

MSN: sgled@hotmail.com

Yahoo Messenger: sgled_usa@yahoo.com

➤ GPS Data Logger



.K. LTD.

SG-RT8

Overview

GPS data logger records location data from GPS signal. Record every position of the device holder as a pre-set interval and then upload those data on PC mapping software for viewing the holder's whole day moving path.

Build-in flash supports two memory ways:

According to time intervals, up to 54000 points could be recorded, format is DATA/TIME/Lon, Lat/Speed;

According to distance intervals, up to 27000 points could be recorded, format is DATA/TIME/Lon, Lat/Speed/Distance;

It supports sequential 10days data saving based on recording GPS data every 5 minutes. User can easily upload the recorded points to Google Earth and Google Maps by USB cable or Bluetooth (optional). Weiom customs software will show the moving path and abnormal alarm on the map.

Optional function

Bluetooth connect function is optional therefore this device can work as a GPS receiver as well, combined it with a Bluetooth enabled PDA or laptop, installed the map software, it will turn to a navigator.

© 1997-2007, S.G. INTERNATIONAL GROUP H.K. LTD. All rights reserved.

Buji Town, Shenzhen 518123, China

Tel: +86-755-25387626 , 84701880 , Fax: +86-755-84701680

Sales email: sgled@vip.163.com

ISO 9001:2000



Cert. #801532



S.G. INTERNATIONAL GROUP H.K. LIMITED

SHENZHEN SHUGUANG DIGITAL TECHNOLOGY CO., LTD.

Add: Gold industrial park, NanLing village, Buji Town, Shenzhen, China

Tel: (86)0755-25387626

84701880

84701680

Fax : (86)0755-84701680

[Http://www.sgcg-group.com](http://www.sgcg-group.com)

E-mail: sgled@vip.163.com

MSN: sgled@hotmail.com

Yahoo Messenger: sgled_usa@yahoo.com

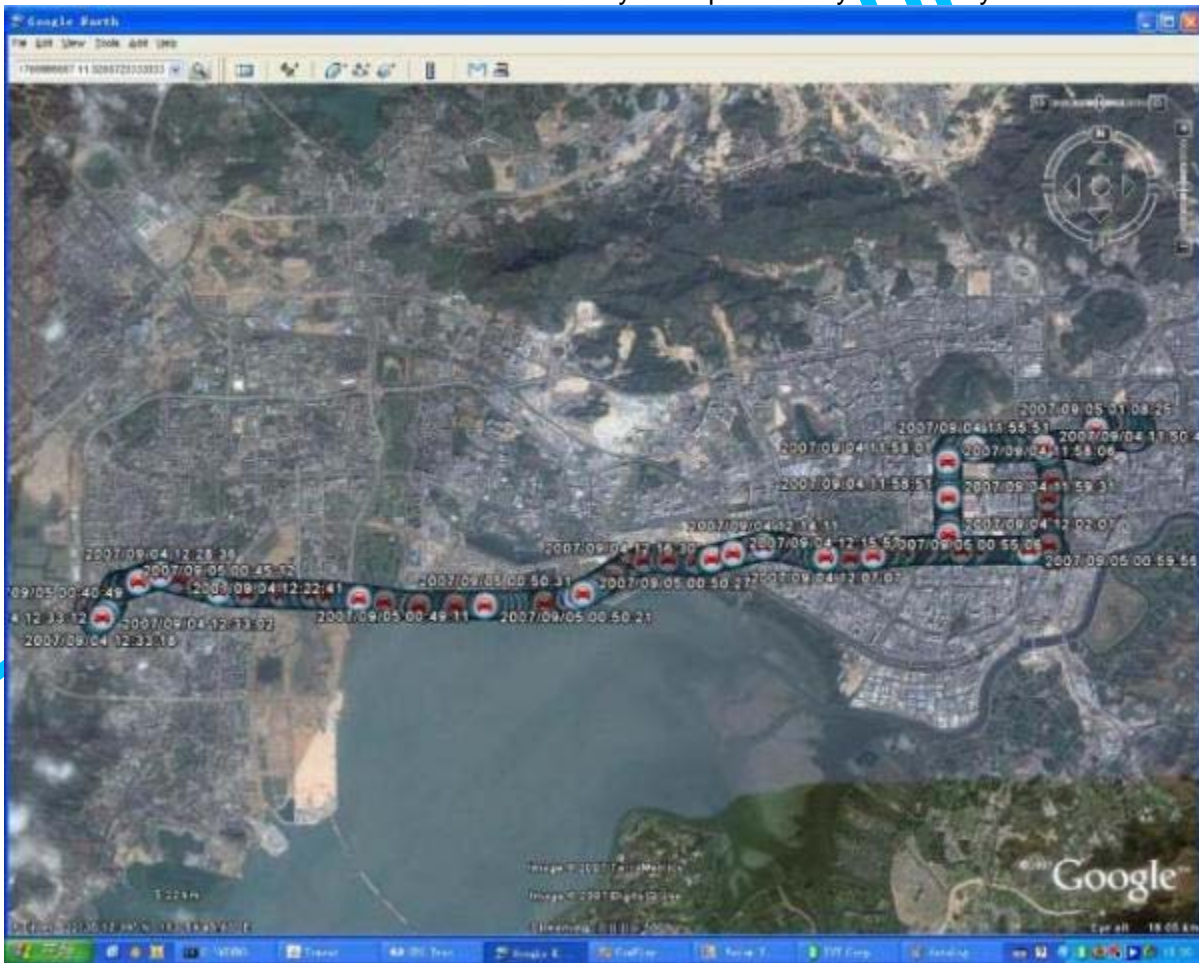
➤ GPS Data Logger

Application

- Outdoor worker management
- Fleet management
- Asset tracking
- Sports and Trail
- Location Based Services enabled devices
- Geographic Surveying
- Portable navigator (with Bluetooth function)

Example

These two pictures come from Google earth which we uploaded a car's two-day data in it, we recorded this car's position every 50 meters. The monitor could check the car's move way and speed easily and clearly.





S.G. INTERNATIONAL GROUP H.K. LIMITED

SHENZHEN SHUGUANG DIGITAL TECHNOLOGY CO., LTD.

Add: Gold industrial park, NanLing village, Buji Town, Shenzhen, China

Tel: (86)0755-25387626

84701880

84701680

Fax : (86)0755-84701680

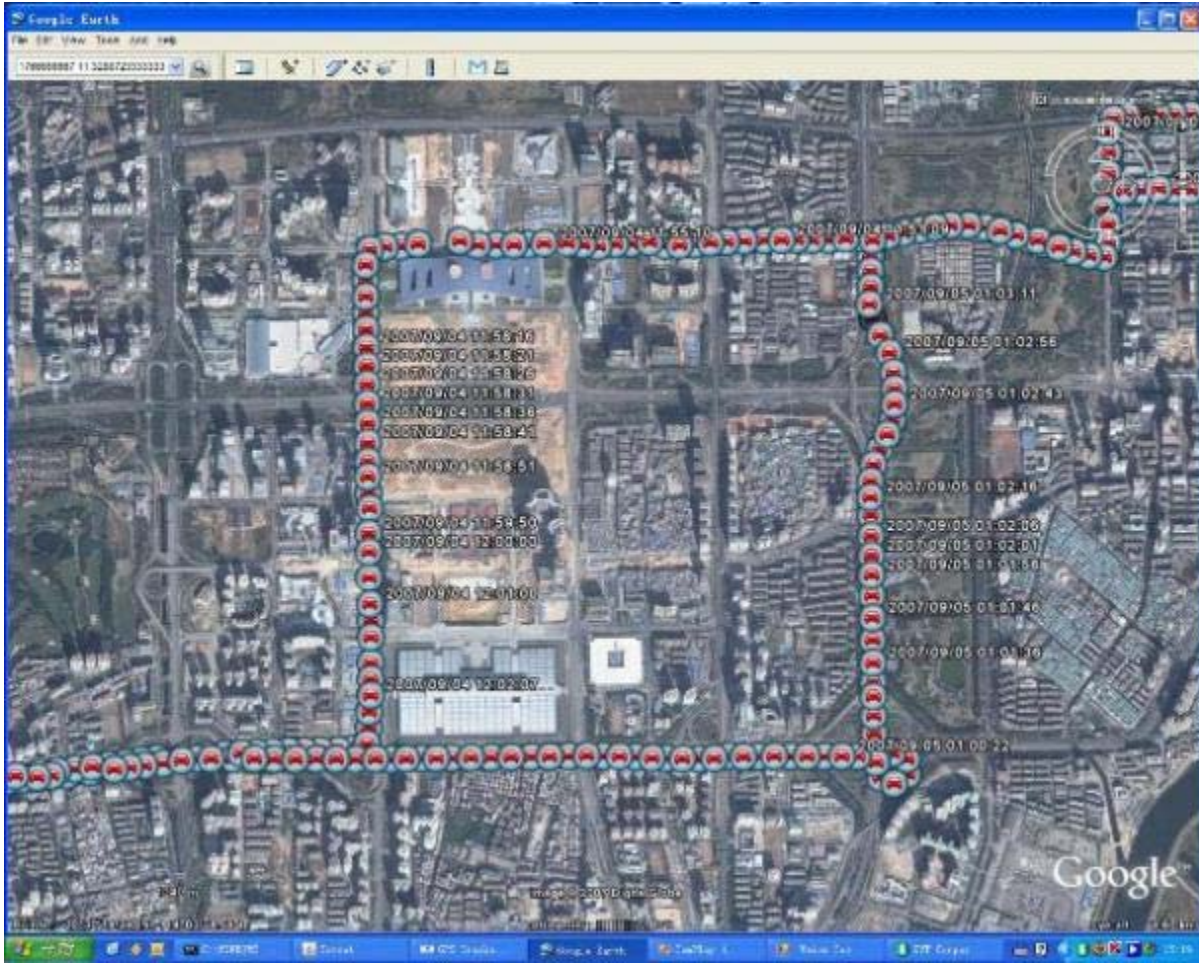
[Http://www.sgcg-group.com](http://www.sgcg-group.com)

E-mail: sgled@vip.163.com

MSN: sgled@hotmail.com

Yahoo Messenger: sgled_usa@yahoo.com

➤ GPS Data Logger



-LTD.

S.G. I



S.G. INTERNATIONAL GROUP H.K. LIMITED

SHENZHEN SHUGUANG DIGITAL TECHNOLOGY CO., LTD.

Add: Gold industrial park, NanLing village, Buji Town, Shenzhen, China

Tel: (86)0755-25387626

84701880

84701680

Fax : (86)0755-84701680

[Http://www.sgcg-group.com](http://www.sgcg-group.com)

E-mail: sgled@vip.163.com

MSN: sgled@hotmail.com

Yahoo Messenger: sgled_usa@yahoo.com

➤ GPS Data Logger

Specification

GPS	
GPS module	SiRF III 20 channels
Protocol	NMEA-0183 compliant protocol
GPS Antenna	Build-in active high sensitivity antenna
Accuracy	1-5m
Update rate	1 HZ
Start time	Cold start: 42s Warm start: 35s Hot start : 1s
Bluetooth(optional)	
Protocol	Support standard NMEA-0183 at 9600 bps baud rate
Connect	Compatible with Bluetooth devices with Serial Port
Electrical	
Operating Voltage	3.3V
Charge voltage	4.5~5V
Standby	15mA
Operating	80mA
Battery	Li-ion 1100mAh
Time to full recharge	4 hours
other	
Product Size	74.5 (L) X 45(W) X 19 (H) mm
Weight	53.8g(including battery)
Box Size	17.5cm*12cm*8.5cm
Box Weight	260g
Carton Size	53cm*38cm*47cm(for 40pcs)
Weight	11KG